



Farr Wind Farm Extension

Exhibition Brochure

June 2026

nadara

Welcome

Farr Wind Farm is located approximately 3.7km from the village of Farr and 5.6km from Tomatin to the east. The development has been operational since 2005 and we are exploring the potential to extend the wind farm by a further ten turbines.

The project could deliver an additional 67MW of renewable electricity - capable of:

- Powering more than 55,286 UK homes
- Strengthening the UK's energy security
- Contributing to our green power future

Up to 10 turbines,
maximum tip
height 200m

Up to 67MW
capacity

~£335,000
community
benefit per year

Potential
to explore
community
ownership

We are
proposing

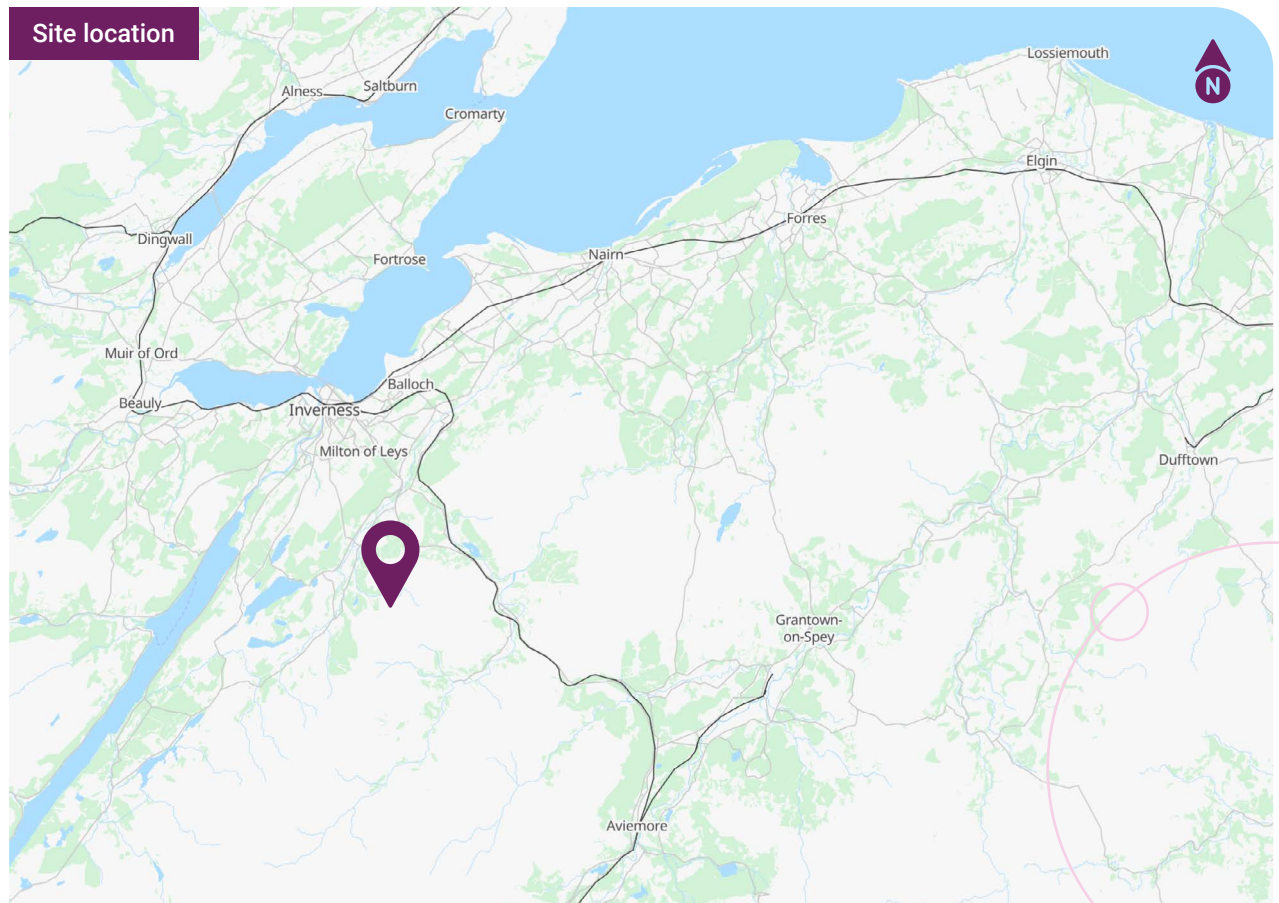
About us

Nadara is a leading independent power producer and a major renewable energy generator operating across Europe and the US, with a significant presence in the UK.

We own and operate over 200 energy sites globally, with 45 onshore wind plants across the UK with 1,071.12MW installed capacity, using diverse technologies including onshore and offshore wind, solar, biomass, and energy storage.

nadara

In Scotland, we have a strong operational footprint and are proud of the contribution we make to Scotland's climate ambitions. Our dedicated Scottish team works closely with communities across the country, ensuring that our projects are shaped by their views and actively support long-term local sustainability.

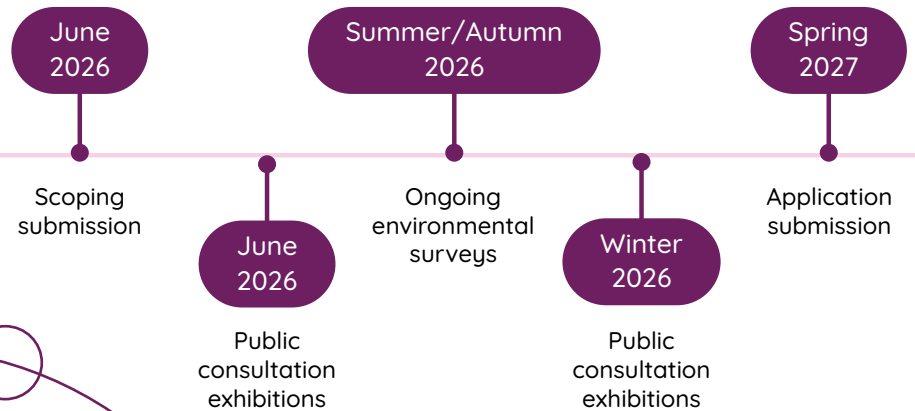


Consultation timeline

We would like to start a conversation with the local community and key stakeholders about how we make sure our plans:

- Consider community feedback
- Support local initiatives
- Deliver a range of benefits locally

We are also embarking upon a series of environmental surveys. The findings from our studies, alongside feedback, will help to inform our proposals – which will be subject to further consultation prior to an application submission.



We welcome your feedback and opinions. Please complete a feedback form or contact the team to discuss the plans further. There are many ways for you to get in touch with us:

Web farrwindfarm.co.uk
Email farr@nadara.com
Phone **0131 2431 380**

Farr Wind Farm Extension
Nadara, 4th Floor, 12 Blenheim Place, Edinburgh, EH7 5JH



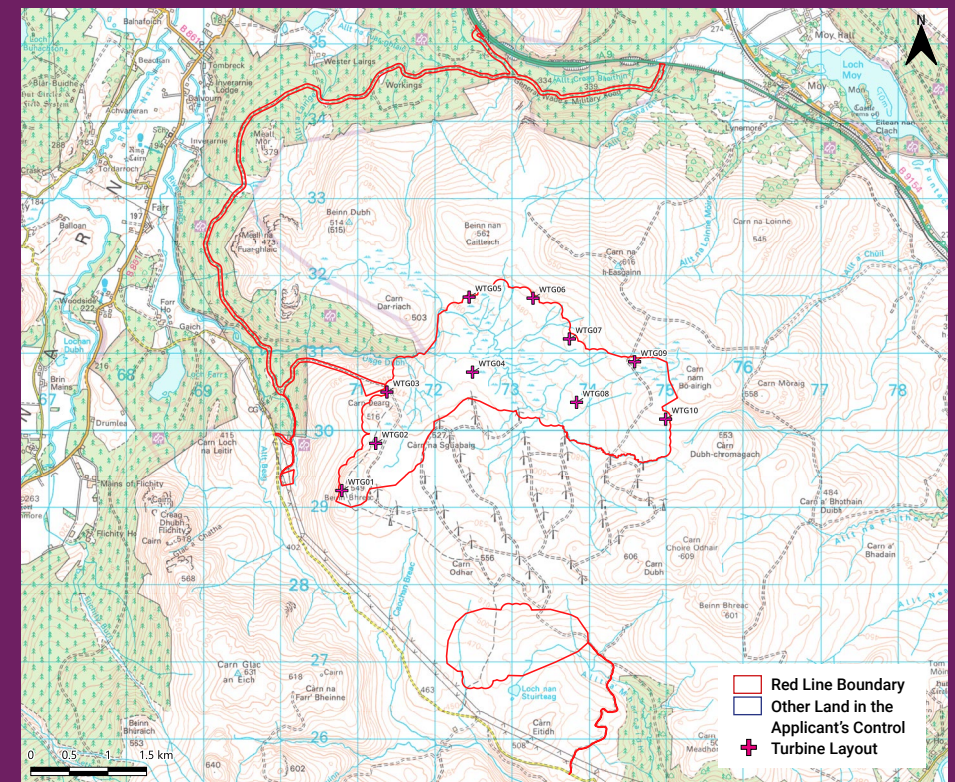
Design process

Many factors will determine the final layout of Farr Wind Farm Extension. This will include:

- Visual impact
- Impact on sensitive habitats
- Proximity to areas of ecological interest
- Engineering constraints
- Community comments

Some of these will not be fully identified until the technical assessments are complete, which means that the layout currently presented is likely to change. We will ensure that the local community and key stakeholders are consulted throughout the development of our proposal and on the final layout.

Current proposals



Development process









We will be submitting a scoping report to the Scottish Government Energy Consents Unit (ECU). This will seek feedback from a variety of consultees, including:

- The Highland Council
- NatureScot
- RSPB
- Scottish Environment Protection Agency (SEPA)
- Historic Environment Scotland (HES)
- Community Councils

This feedback will determine the scope of the Environmental Impact Assessment (EIA) and inform the extent of our surveys and assessments. It will ultimately influence the layout of the site to ensure that it minimises effects on the local environment.



We will evaluate any potential significant effects of the proposed development, and these will be presented within the EIA Report (EIAR). The EIAR will accompany the application for consent to the Scottish Government and cover topics including, amongst others:

-  Ecology
-  Ornithology
-  Hydrology
-  Hydrogeology and Peat
-  Aviation and Telecommunications
-  Socioeconomics and Tourism
-  Noise and Vibration
-  Traffic and Transport

Environmental Impact Assessment

We have appointed environmental consultants Tetra Tech to carry out a detailed Environmental Impact Assessment (EIA) of the proposed Farr Wind Farm Extension, the outcomes of which will be presented in an associated Report (EIAR) to accompany the application for consent.

The EIA will:

- Identify and assess the potential significant environmental effects of the proposal
- Help to shape the design and layout of the proposed development

Climate

The project is underpinned by the climate emergency and the drive to offset carbon emissions.

Construction of the Proposed Development will generate limited greenhouse gas (GHG) emissions, and the turbines will incorporate embodied carbon.

Carbon contributions will be measured against the energy offset created by the development, leading to a net positive impact on climate change.

The Scottish Government's Carbon Calculator Tool will facilitate a statement of expected carbon savings over the lifetime of the Proposed Development. Where required, EIAR topics will consider predicted changes in environmental conditions to allow an assessment that takes account of climate change conditions.

Ecology & nature conservation

The site of the Proposed Development does not overlap with any ecological designations. Baseline ecology surveys are ongoing and will be completed in Spring and Summer 2026. Data is being collected to determine whether protected species, including bats, otter, water vole and fish, are present and, where relevant, their activity levels.

Habitats on the site include blanket mire, dry heath and wet heath, all of which are protected. Nadara will apply a sensitive design approach to reduce potential effects on species and habitats by avoiding them where possible and applying embedded best practice mitigation during the construction and operational phases of the Proposed Development.

Ornithology

Two years of ornithological surveys at the site will be completed in Autumn 2026. Survey data will be supplemented by additional ornithological information, including relevant data sets from nearby wind farm assessments and third-party organisations such as the RSPB, where available.

The presence of ornithological territories on site will inform layout evolution. Collision Risk Modelling (CRM) will further advise on the need for mitigation through turbine relocation or micrositing. Low collision risk values have been recorded for the majority of species across wind farm developments within 20km of the site.



Hydrology, hydrogeology, geology and soils (including peat)

This assessment considers the hydrological, hydrogeological and geological characteristics of the site and identifies sensitive areas, constraints and buffers to inform the layout design.

Baseline mapping identified the key consideration as the presence of Class 1 peat (nationally important carbon-rich soils, deep peat and priority peatland habitat) across much of the site, with localised areas of Class 2–5 peat elsewhere.

Subsequent Phase 1 peat probing confirmed that Class 1 peat is less extensive than baseline mapping suggested. The layout will seek to avoid these areas where possible.

Some internal access tracks are likely to be “floated” to reduce potential impacts on deeper peat areas.





Noise & vibration

This assessment will consider the effects of construction and operational noise on nearby noise-sensitive receptors, including cumulative impacts with surrounding operational and proposed wind farms.

Ongoing noise assessment will inform the layout design to ensure there are no noise level exceedances at identified properties. Where required, appropriate mitigation will be employed to ensure noise limits are met.

Archaeology & cultural heritage

This assessment considers the potential effects of the proposal on cultural heritage assets within the vicinity and wider area. There

are no archaeological or cultural heritage designations overlapping the site, although several listed buildings and scheduled monuments are present within 20km. Battle of Culloden battlefield is also located approximately 12.5km away at its nearest point.

An extensive baseline assessment will be supplemented by a site walkover and visits to surrounding designated features to facilitate assessment of the potential impact of the development on their setting. Where required, visualisations including wireframes and photomontages will support assessment of monument setting and advise on the need for layout changes to mitigate potential impacts.

Traffic and transport

The main transport constraints relating to the Proposed Development are the transportation of abnormal loads and the effects of construction traffic on sensitive receptors along the proposed construction route.

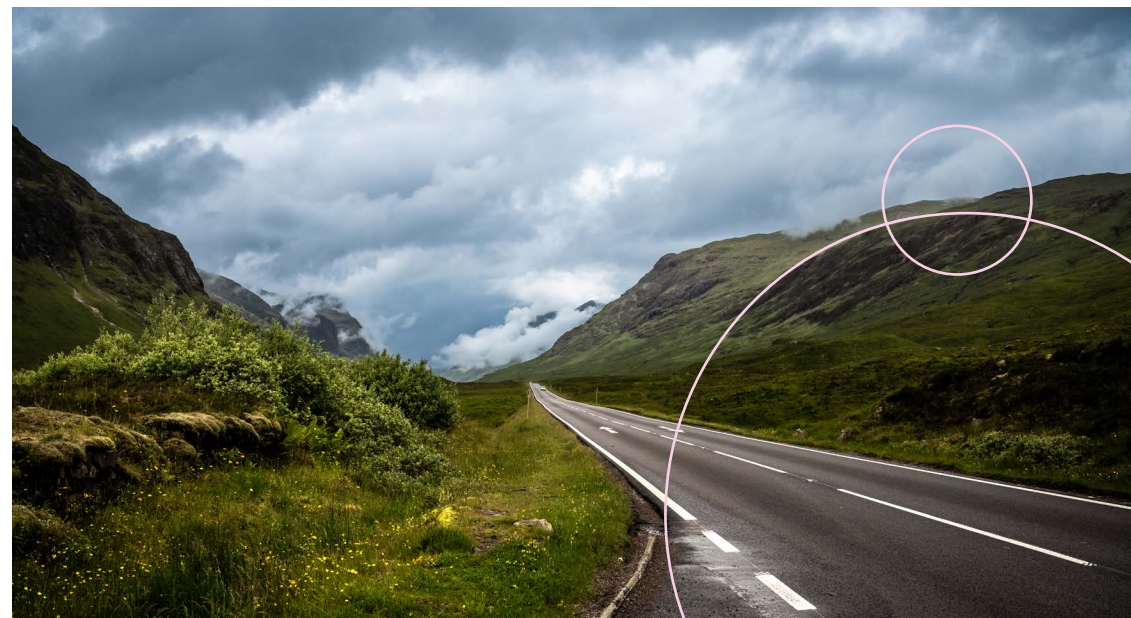
Turbine component delivery is anticipated from one of three ports – Port of Nigg, Cromarty or Inverness – to the wind farm site via the A9 and an existing forestry track. The track entrance is currently being relocated as part of the A9 Dualling Programme, although design review indicates it is suitable for the largest turbine components.

An Abnormal Indivisible Load (AIL) assessment will identify any pinch points along the delivery route

and, where necessary, mitigation measures to reduce potential environmental effects.

Two additional access routes associated with the existing wind farm may also be used during construction and operation to facilitate standard HGV traffic and work vans: one to the east off the minor road connecting the B851 and Corrievorrie road, and one to the south off the same road.

An Outline Construction Traffic Management Plan (OCTMP) will form part of the EIAR and will provide measures to manage temporary traffic increases safely and effectively along the selected access route.





Landscape and visual impact

Once the design layout has been finalised, a full Landscape and Visual Impact Assessment (LVIA) will be carried out.

LVIA will set out the likely significant effects of the Proposed Development on landscape and visual receptors within the study area, identified through a Zone of Theoretical Visibility (ZTV) showing where turbines are theoretically visible.

The ZTV is based on a “bare earth” model and does not include screening from buildings or vegetation, which may reduce turbine visibility.

A review of the ZTV against baseline designations and receptors will inform the selection of viewpoints for photomontages included within the LVIA. Viewpoints will be confirmed and, where required, amended following site visits to assess the landscape context and potential for significant environmental **effects**.

Socioeconomics, recreation and tourism

This assessment will consider socio-economic effects at local (electoral ward), regional (council boundary) and national level. Socio-economic impacts associated with onshore wind farms primarily relate to job creation, use of local services, local income expenditure and community benefit. These can result in both short- and long-term direct beneficial effects for surrounding communities.

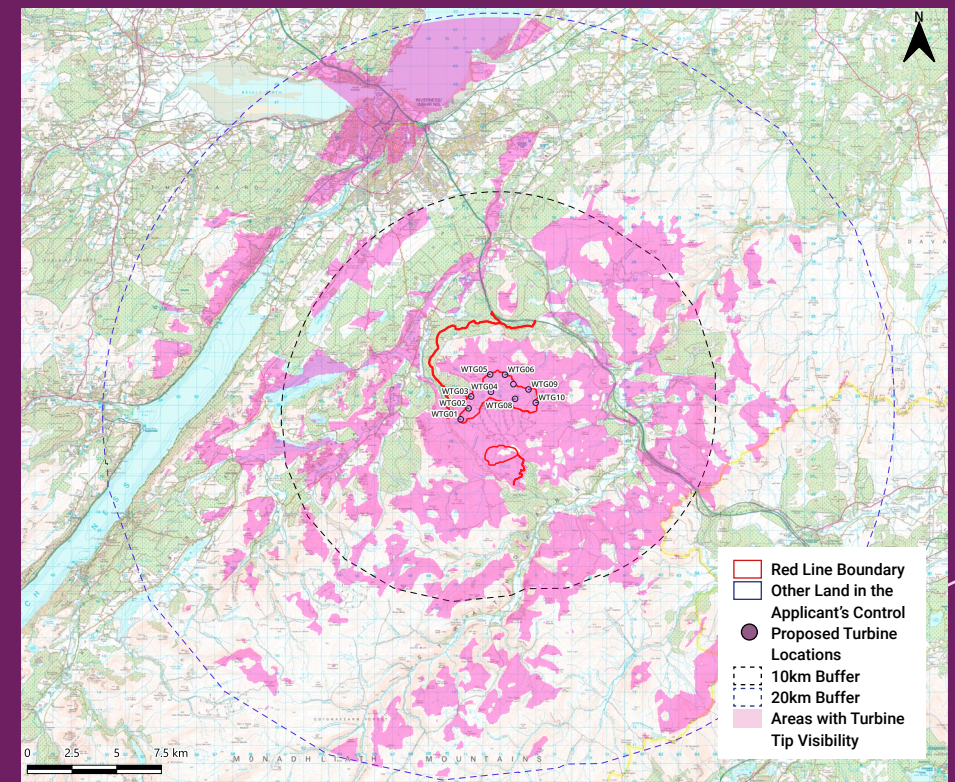
An assessment of effects on recreation and tourism receptors will also be undertaken, taking account of published data on visitor numbers and the value of tourism to the The Highland Council area economy. This will include consideration of local businesses such as accommodation providers, tourism businesses, transport operators, visitor attractions and tourism agencies.

Aviation and electromagnetic interference

This assessment will consider the potential effects of the Proposed Development on civil and military aviation interests, including Inverness Airport and RAF Lossiemouth.

The assessment will be informed by consultation with the Ministry of Defence, National Air Traffic Services and Civil Aviation Authority.

Accredited aviation lighting will be provided in accordance with CAA requirements, as turbines exceed 150m in height. The LVIA will include night-time photomontages to support assessment of the associated visual effects of the lighting. Telecommunications links will also be identified and considered within the layout design to ensure they are avoided.



Clean energy - supporting a sustainable Scotland

Energy use across power, heat and transport is one of the largest sources of carbon emissions. Unlike fossil fuel, wind power generates electricity without releasing greenhouse gasses – making it an effective tool to tackle climate change.

The expansion of renewable energy in Scotland - be it onshore wind, offshore wind, solar, pump storage and hydro – is directly helping to reduce the carbon footprint of the energy system.

By bringing more renewable energy to Scotland, we are helping to:

- **Reduce reliance on fossil fuels**
- **Strengthen energy security**
- **Support government ambitions**
- **Help to tackle climate change**

Climate change - impacts in Scotland

Scotland is already experiencing the effects of climate change. Across the UK, temperatures have been rising steadily by around 0.25°C per decade since the 1980's. In Scotland, the evidence is increasingly apparent.

In 2022, Scotland recorded its warmest year on record, with temperatures reaching 35°C. At the other end of the scale, over the past decade, average winter temperatures have also risen significantly.

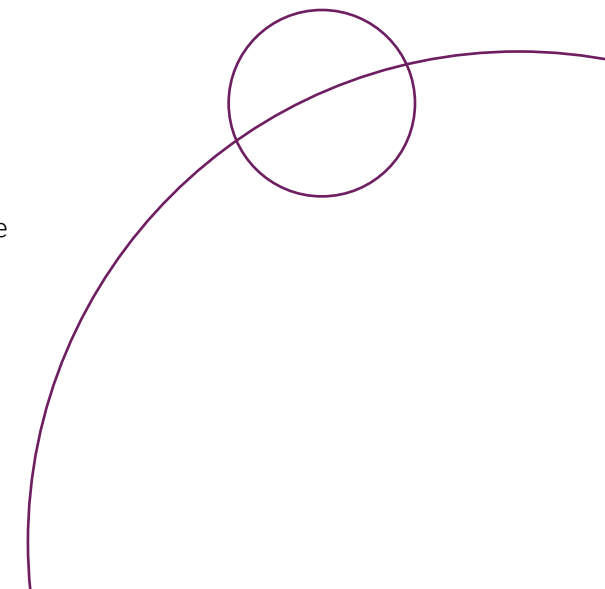
Extreme weather events that were once considered rare are also becoming more common. Flooding is now a regular occurrence across the country and Scotland has also experienced some of the largest wildfires in its recorded history.

Without action these impacts will continue to increase. Part of our response is the transition to renewable energy - helping to reduce emissions and limit future climate disruption.

Renewable energy - supply & demand

Scotland already generates a wealth of renewable energy. However, demand is rising. There is increasing electrification across our transport, heat and digital infrastructure, and it is projected that electricity demand will at least double by 2050.

Meeting this demand will depend on significant investment in the transmission network. However, as infrastructure is upgraded and more renewable generation comes online, Scotland will be better placed to meet growing demand with clean energy.



Community benefit

Farr Wind Farm has been operating since 2005. In that time it has delivered a range of local opportunities for the regional supply chain and the community.

We acknowledge that the communities closest to the wind farm are experienced in managing community benefit funding and delivering successful projects. We would like to learn from them, and understand how we can best work together to ensure that Farr Wind Farm Extension can help to support the local area.

Community ownership

We want to work with the local community and explore the potential to provide community ownership. At several of our wind farms we have co-operatives which enable people to buy a stake in their local wind farm.

If you'd like to know more, contact our project team at farr@nadara.com.

Supply chain

We want to hear from businesses in the local area, and across the Highlands, that could be involved in the project should it be approved.

If you are a local company and would like to register your interest visit nadara.com/our-suppliers



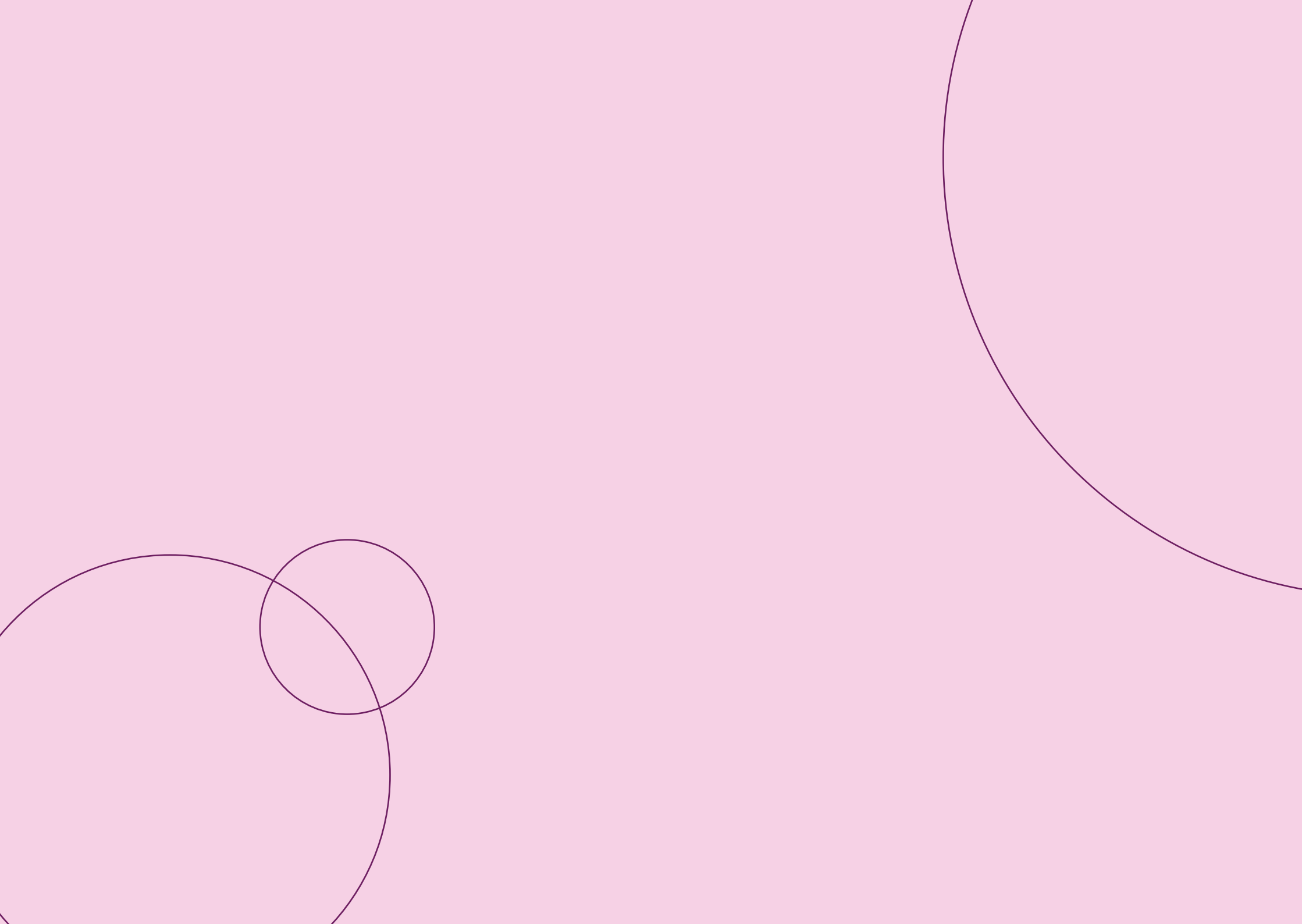
Thank you

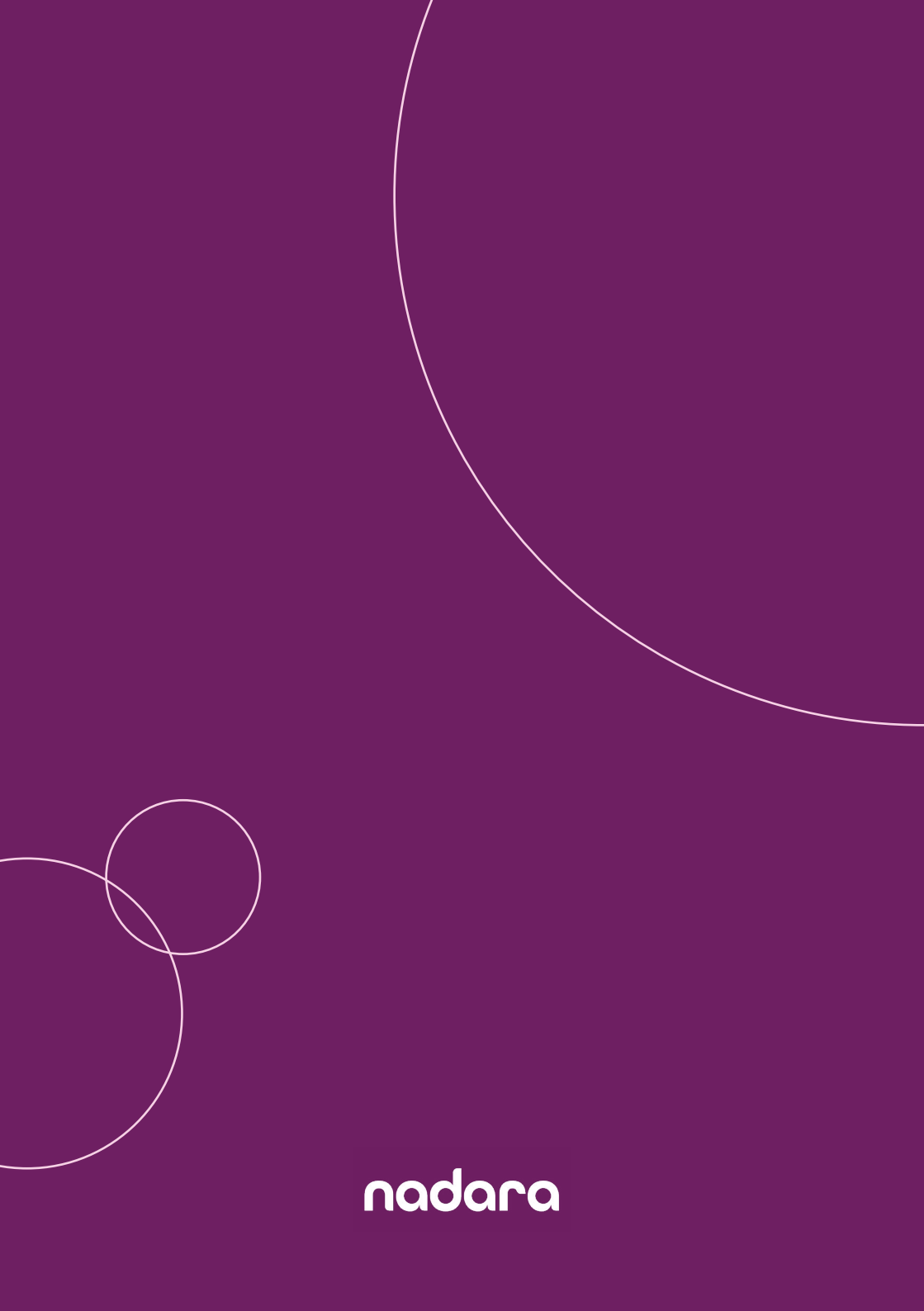
Please take a moment to complete a feedback form, which can also be found online along with all our latest exhibition materials at: farrwindfarm.co.uk

Web farrwindfarm.co.uk
Email farr@nadara.com
Phone **0131 2431 380**

Farr Wind Farm Extension
Nadara, 4th Floor, 12 Blenheim Place, Edinburgh, EH7 5JH







nadara