

Notes: This drawing is based on a computer generated Zone of theoretical Visibility (ZTV). The areas shown indicate the maximum theoretical visibility of the proposed turbines using OS Terrain 50 data only and do not take account of any screening from vegetation or built-form. The ZTV also includes an adjustment that allows for the Curvature and Light Refraction of the Earth.

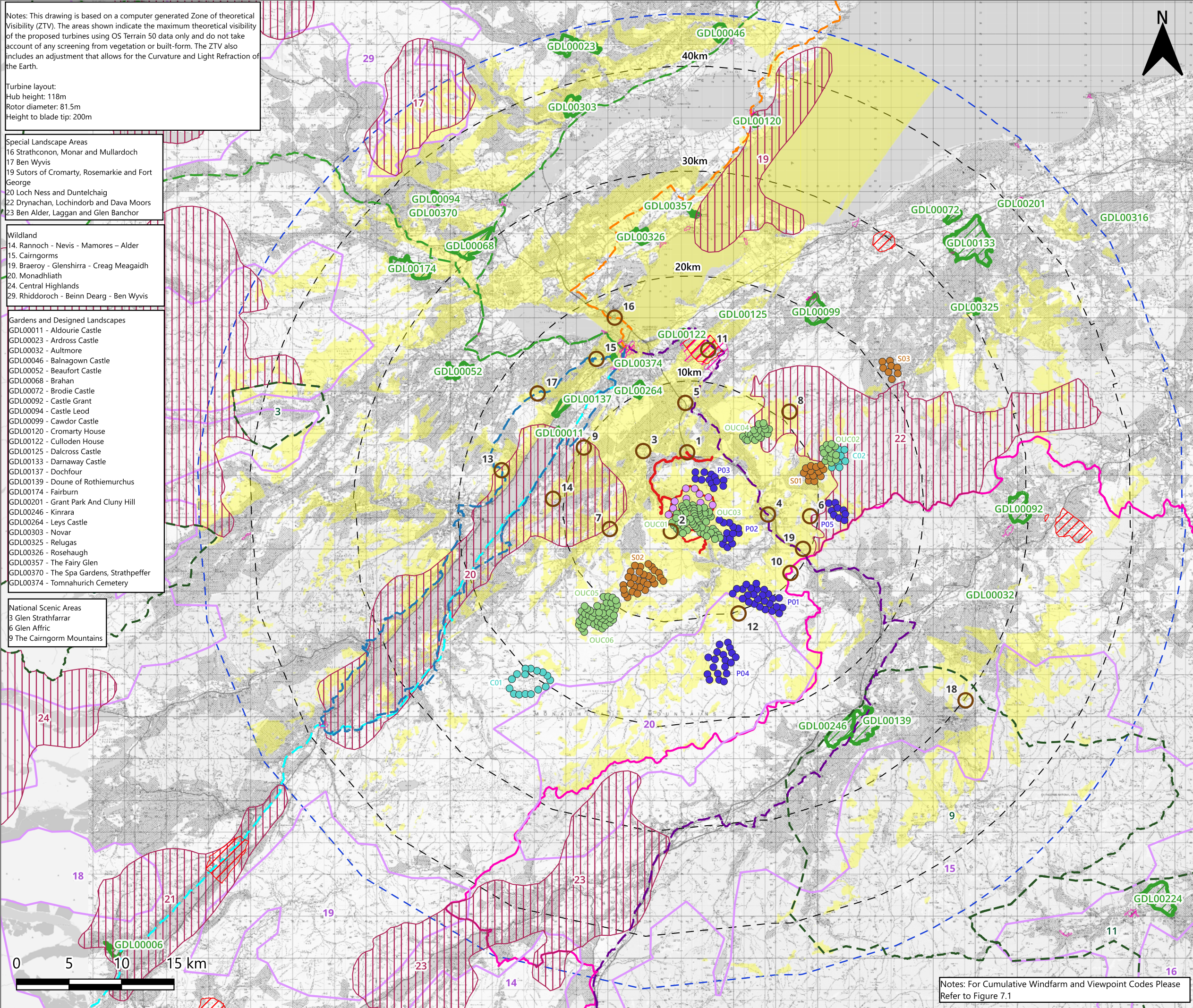
Turbine layout:
 Hub height: 118m
 Rotor diameter: 81.5m
 Height to blade tip: 200m

Special Landscape Areas
 16 Strathconon, Monar and Mullardoch
 17 Ben Wyvis
 19 Sutors of Cromarty, Rosemarkie and Fort George
 20 Loch Ness and Duntelchaig
 22 Drynahan, Lochindorb and Dava Moors
 23 Ben Alder, Laggan and Glen Banchor

Wildland
 14 Rannoch - Nevis - Mamores - Alder
 15 Cairngorms
 19 Braeroy - Glenshirra - Creag Meagaidh
 20 Monadhliath
 24 Central Highlands
 29 Rhiddoroch - Beinn Dearg - Ben Wyvis

Gardens and Designed Landscapes
 GDL00011 - Aldourie Castle
 GDL00023 - Ardrross Castle
 GDL00032 - Aultmore
 GDL00046 - Balnagown Castle
 GDL00052 - Beaufort Castle
 GDL00068 - Brahan
 GDL00072 - Brodie Castle
 GDL00092 - Castle Grant
 GDL00094 - Castle Leod
 GDL00099 - Cawdor Castle
 GDL00120 - Cromarty House
 GDL00122 - Culloden House
 GDL00125 - Dalcross Castle
 GDL00133 - Darnaway Castle
 GDL00137 - Dochfour
 GDL00139 - Doune of Rothiemurchus
 GDL00174 - Fairburn
 GDL00201 - Grant Park And Cluny Hill
 GDL00246 - Kinrara
 GDL00264 - Leys Castle
 GDL00303 - Novar
 GDL00325 - Relugas
 GDL00326 - Rosehaugh
 GDL00357 - The Fairy Glen
 GDL00370 - The Spa Gardens, Strathpeffer
 GDL00374 - Tomnahurich Cemetery

National Scenic Areas
 3 Glen Strathfarrar
 6 Glen Affric
 9 The Cairngorm Mountains



NOTES

- Verifying Dimensions. The contractor shall verify dimensions against such other drawings or site conditions as pertain to this part of the work.
- Existing Services. Any information concerning the location of existing services indicated on this drawing is intended for general guidance only. It shall be the responsibility of the contractor to determine and verify the exact horizontal and vertical alignment of all cables, pipes, etc. (both underground and overhead) before work commences.
- Issue of Drawings. Hard copies, dwf and pdf will form a controlled issue of the drawing. All other formats (dwg, dxf etc.) are deemed to be an uncontrolled issue and any work carried out based on these files is at the recipients own risk. RPS will not accept any responsibility for any errors arising from the use of these files, either by human error by the recipient, listing of un-dimensioned measurements, compatibility issues with the recipient's software, and any errors arising when these files are used to aid the recipients drawing production, or setting out on site.

Legend

- Red Line Boundary
- Lines Indicating the Distance from Proposed Turbines
- 45 km Study Area
- Proposed Turbine Locations
- Consented (C)
- In planning (P)
- Operational and Under Construction (OUC)
- Scoping (S)
- Cairngorms National Park
- The Caledonia Way
- The Far North Way
- The Loch Ness 360
- The Lochs and Glens Way
- North Coast 500
- Battlefields Inventory
- Conservation Areas
- Gardens and Designed Landscapes
- Special Landscape Area
- Wild Land Area
- National Scenic Areas
- Zone of Theoretical Visibility - Blade Tip
- Viewpoint Location

Rev	Description	Date	Dnn/ Chk/App

TETRA TECH
 Issuing Office:
 Elmwood House, 74 Boucher Road
 Belfast,
 BT12 6RZ
 Tel: +44 (0) 28 9066 7914
 tetratech.com/europe

Client
nadara

Project Name
Farr Wind Farm Extension

Sheet Title
Landscape Designations and Long Distance Recreational Routes within 45km

Model Reference N/A				
TTE Project Number 794-NI-P&E-02915	Drawn By CM	Checked By KO	Approved By KO	Scale @ A3 As Shown
Document Reference Figure 7.5		Revision 01	Status S	Date May 2026

Notes: For Cumulative Windfarm and Viewpoint Codes Please Refer to Figure 7.1